

Live Oak Town Hall

Streetscape Improvements

August 6th, 2024



MANU KOENIG
1ST DISTRICT SUPERVISOR

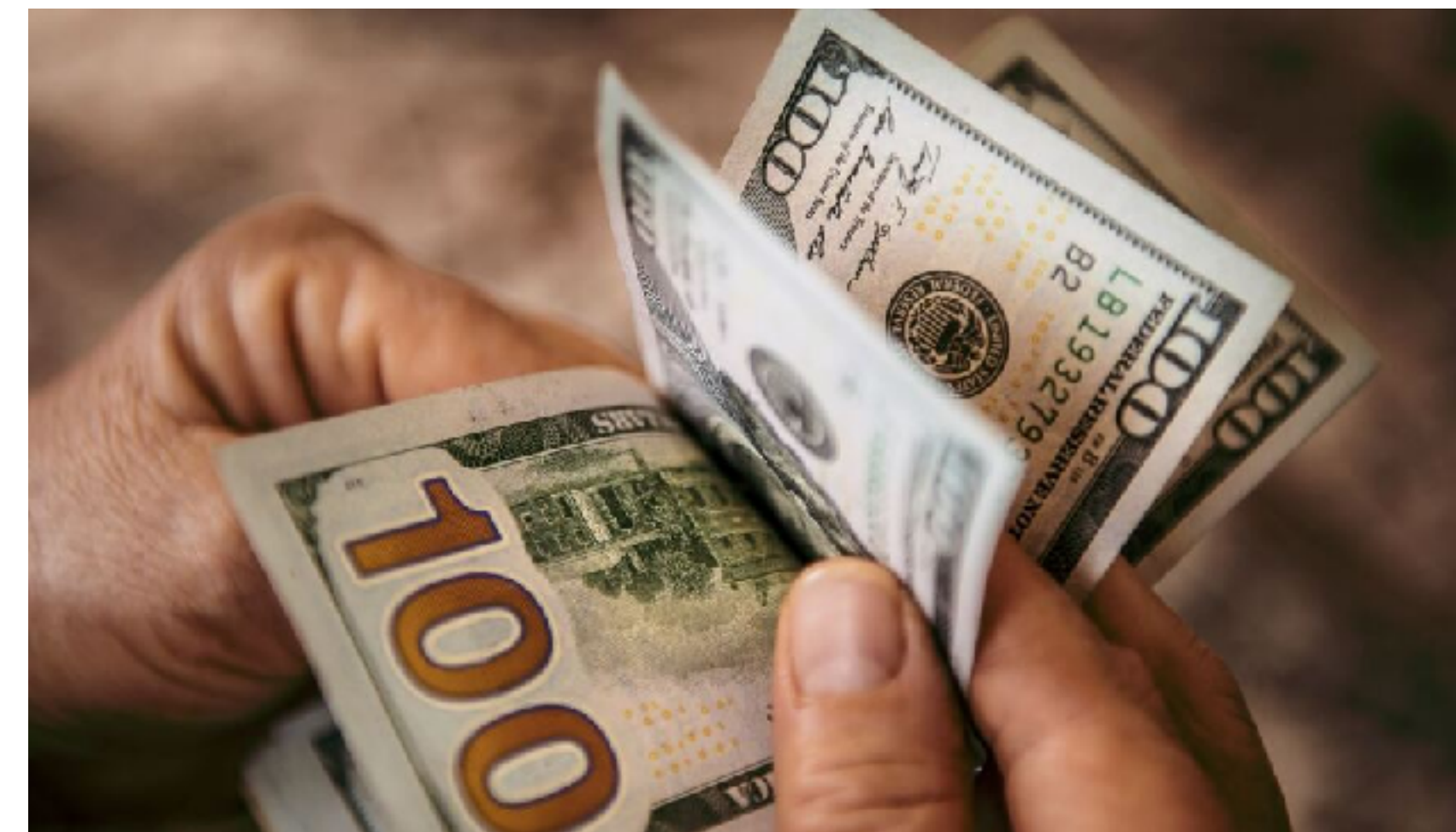
Agenda

- Budget Overview
- Current projects/ City of Santa Cruz projects
- Streetscape maintenance
- Moran Lake
- East Cliff Walkway
- Schwan Lake Connection
- Q&A
- Adjourn



County Budget Update

- **Jun 4th** - Preliminary County Budget approved for 2024-2025, includes \$20K for East Cliff Dr Bike and Pedestrian Safety Improvements, \$75K TOT yet to be allocated for District
- **Sep 10th** - Final Budget Review, possibly including Measure K (est. \$7M in revenues in year 1, \$10M in proceeding years)
- \$1M for parks, \$1M for road repair, \$1M for housing, \$1M for homelessness



East Cliff / Portola Resurfacing



2021



2024



Murray Street Bridge

Seismic Retrofit & Barrier Rail Project

- Bids Due: August 29
- Eng. Estimate: \$50M
- Est. Schedule: Fall 2024-2026
- Eastbound traffic to remain open during majority of project
- Improvements:
 - Structural Upgrades
 - Standard curbs
 - 6-foot bike lanes
 - 7.5-foot sidewalk (ocean side)
 - Barrier Rails (ocean/harbor views)



www.cityofsantacruz.com/murraystreetbridge

Rail Trail Segments 8 and 9

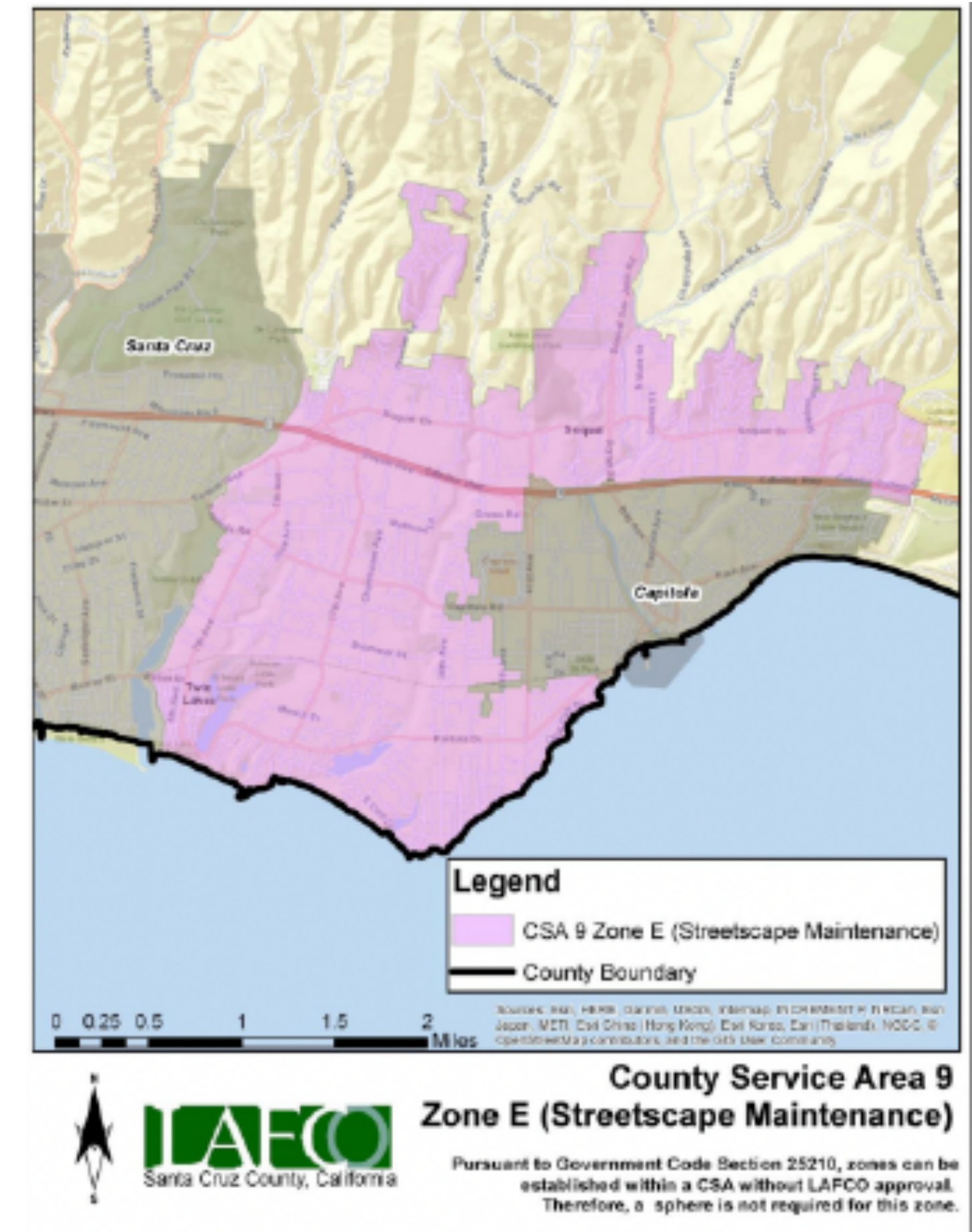


Eng. Estimate: \$36M*
Est. Final Design & Permitting: Fall 2026
Est. Construction: Fall 2026-2027

Live Oak/Soquel Streetscape Maintenance



Capitola Rd, May 2023



- **Apr 30th** - CSA 9E vote to increase funds for Live Oak/Soquel streetscape maintenance fails

Proposed Solution: Adopt a Planter Program

- **Examples:** pocket park on 17th & East Cliff, Pleasure Pt Park, Los Gatos (has 30 planters that have been adopted and a plant guide), Morgan Hill, Sanger and Leemore, pocket park
- **How it works:**
 1. Choose a planter
 2. See if it's available and register your contact info
 3. Prepare the ground
 4. Receive plants, compost, mulch, and acknowledgement plaque
- **Would you be interested?**



Moran Lake

Monarch Butterfly Habitat Management Plan

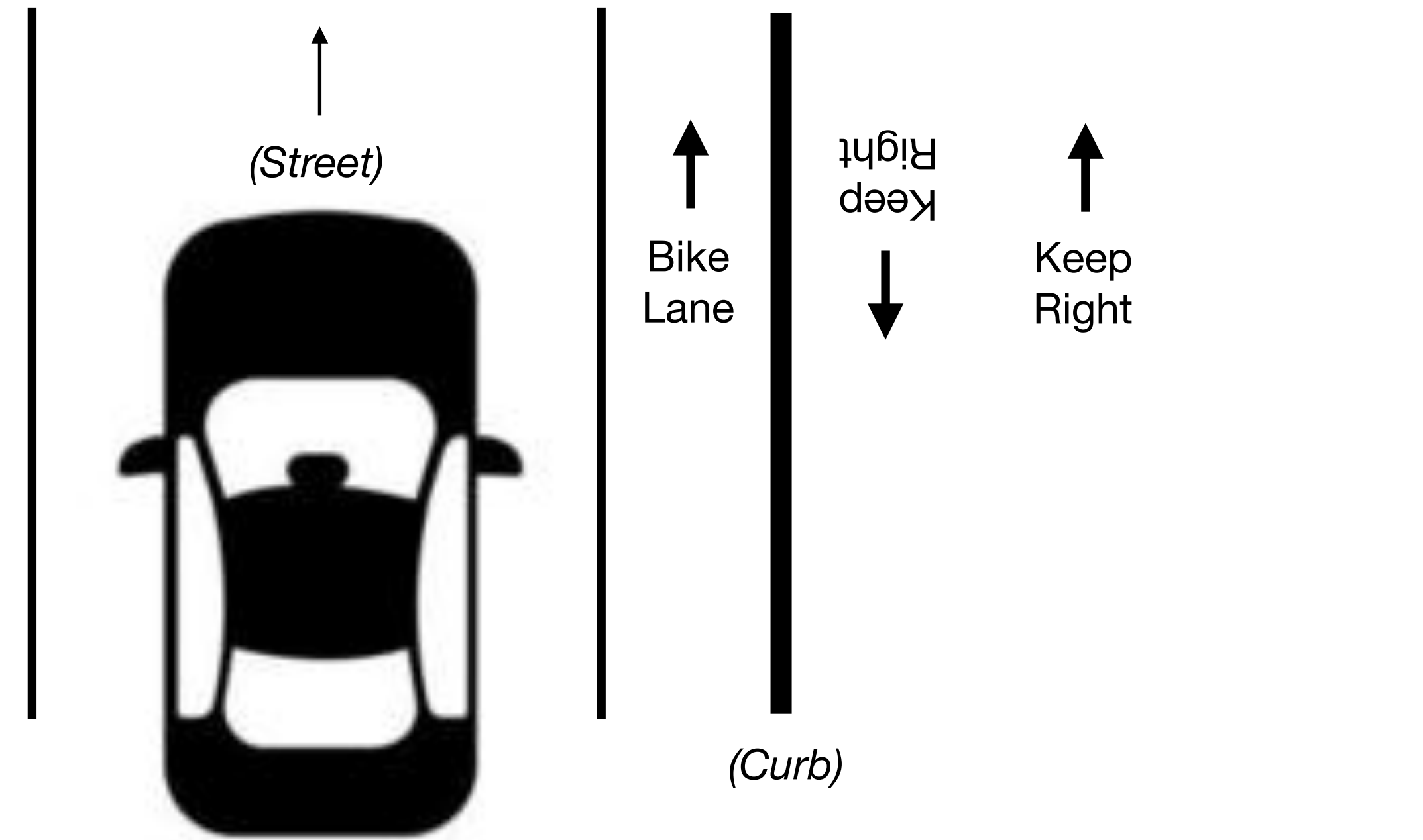


Figure 7 Recommended Overall Management Actions



Imagery provided by Microsoft Bing and its licensors © 2024.

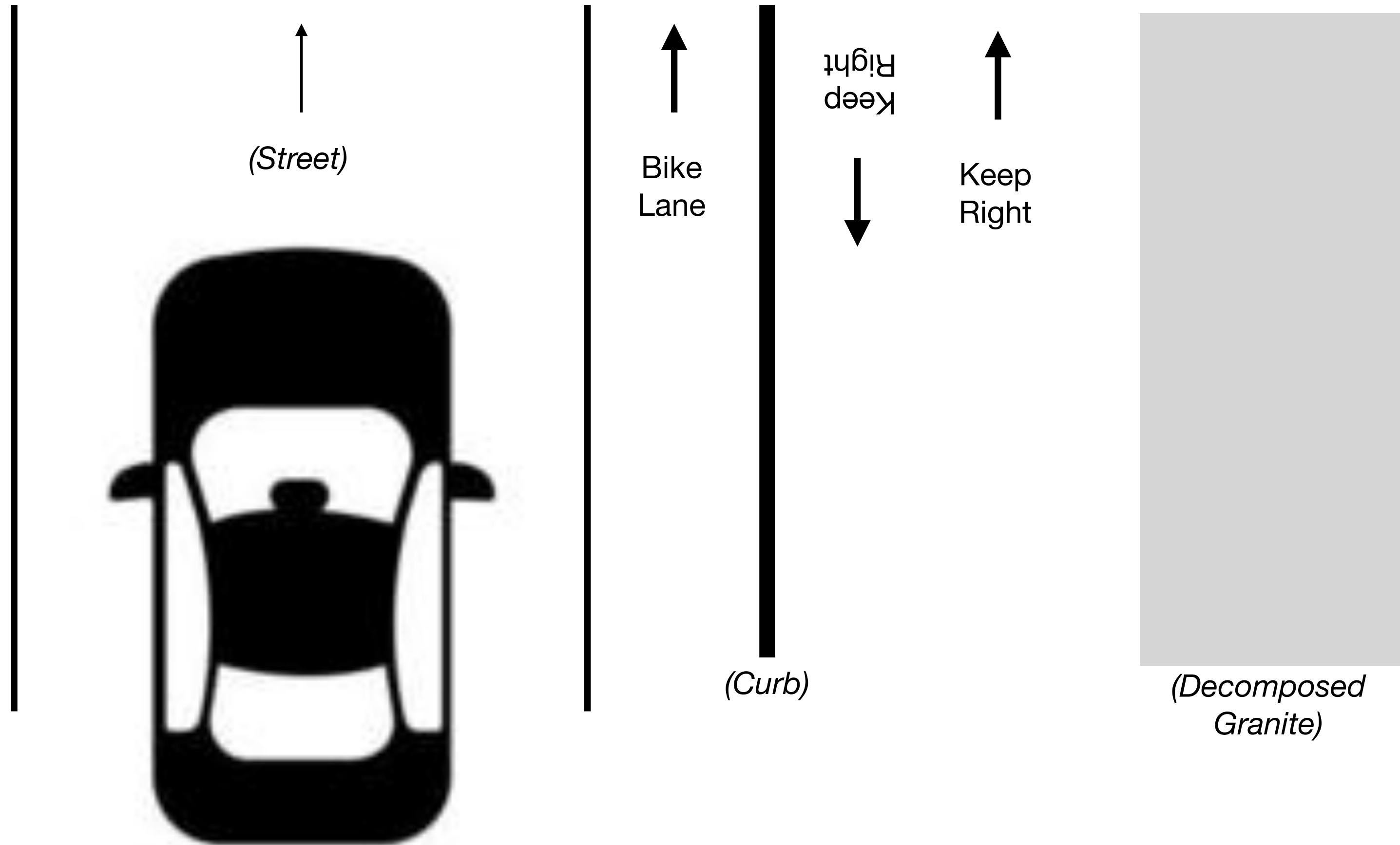
East Cliff Walkway - Existing Conditions



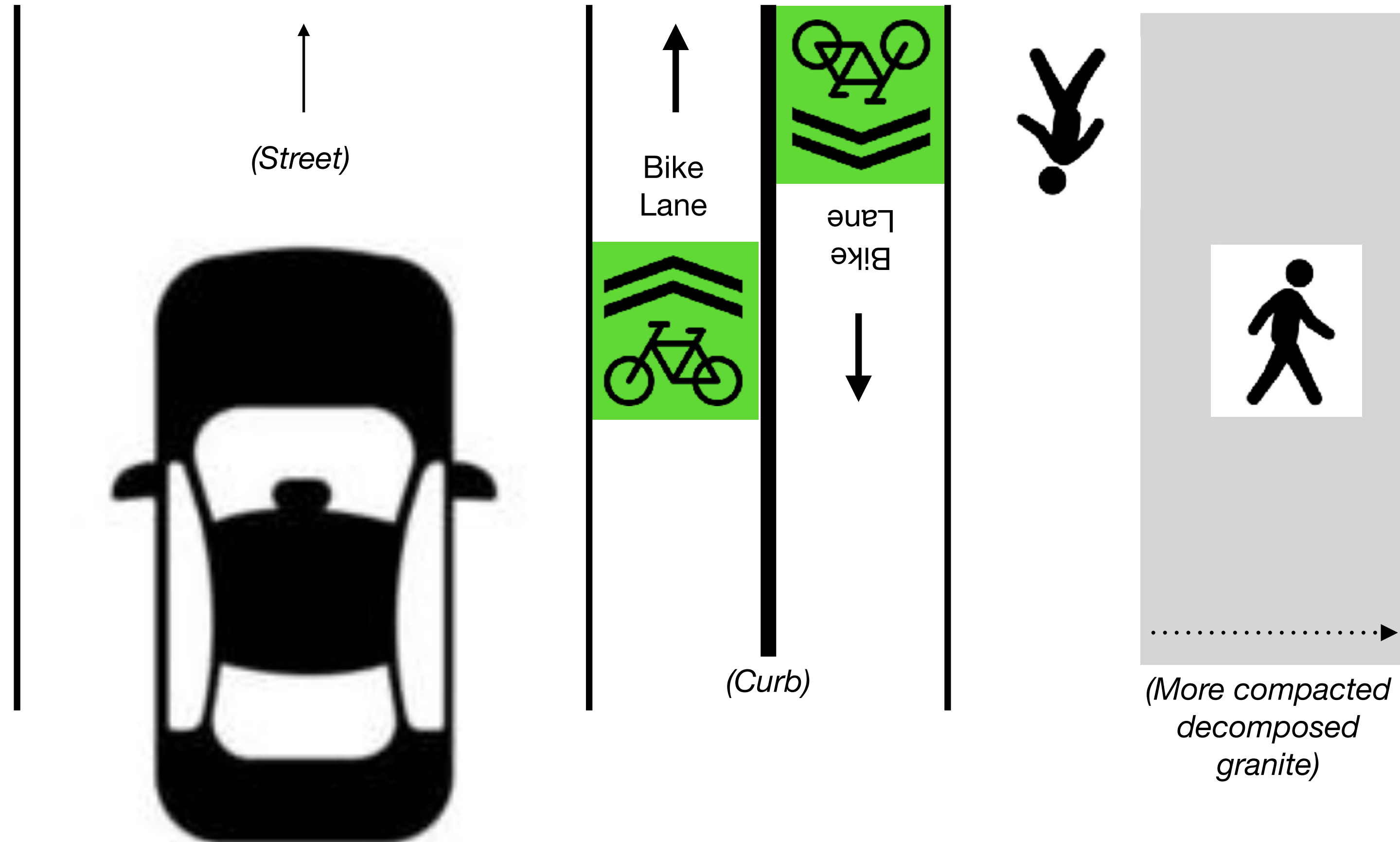
Problems:

1. There is no signage to distinguish bike and pedestrian areas on the side walk.
2. The lack of smooth asphalt closer to the cliff means that strollers, wheelchairs and other slow moving wheeled traffic tend to stay closer to the curb.

Option A (Existing Conditions)

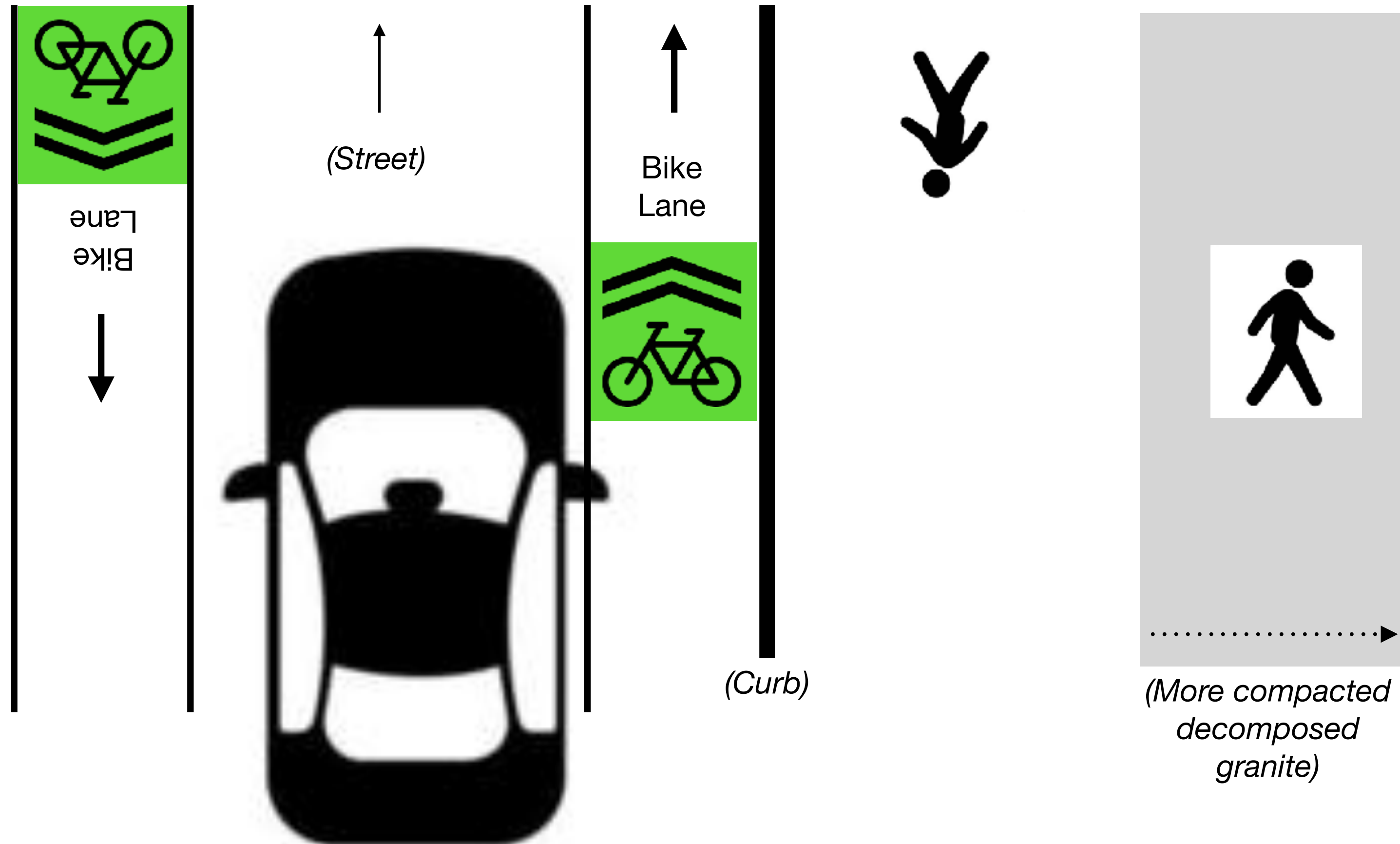


Option B

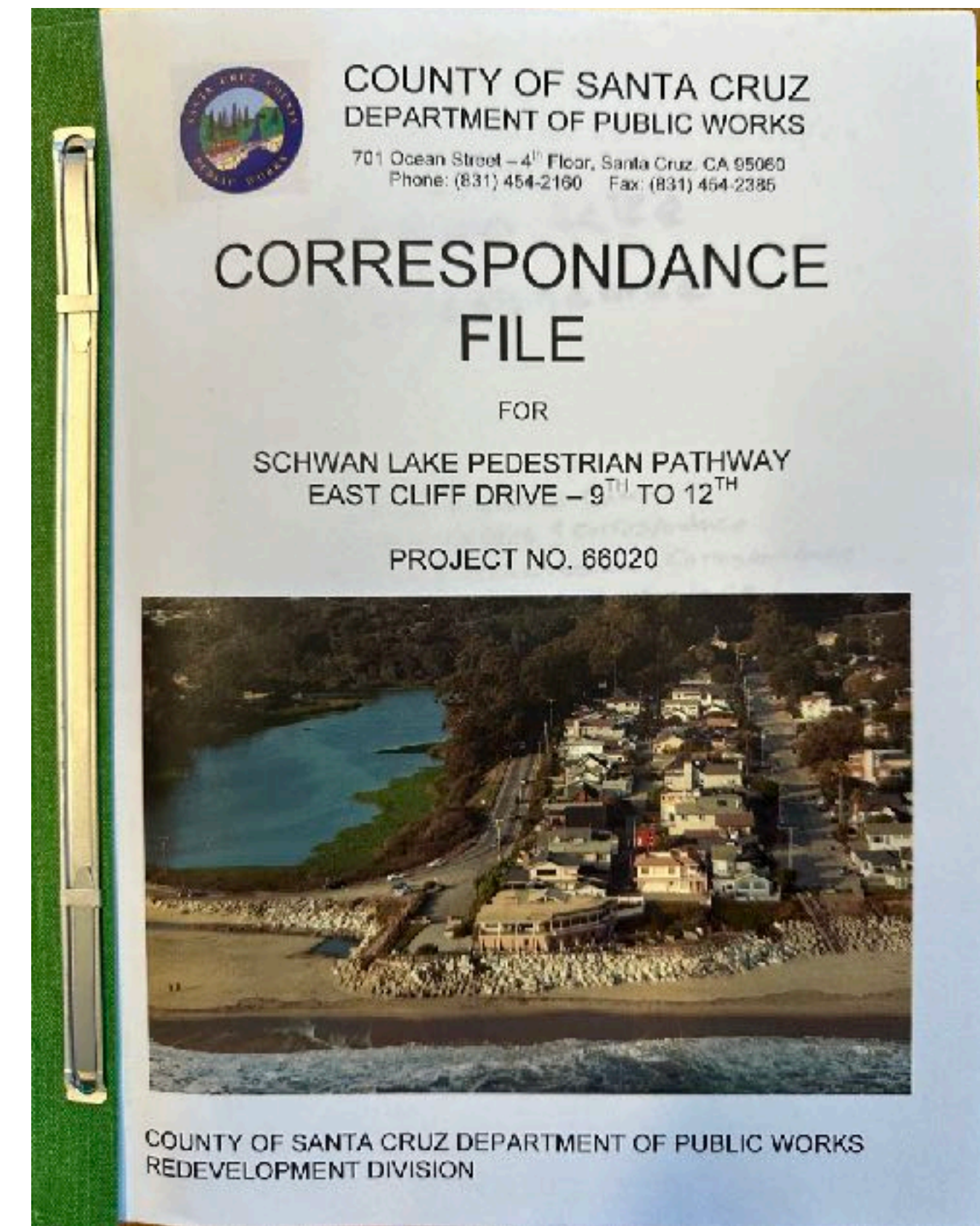
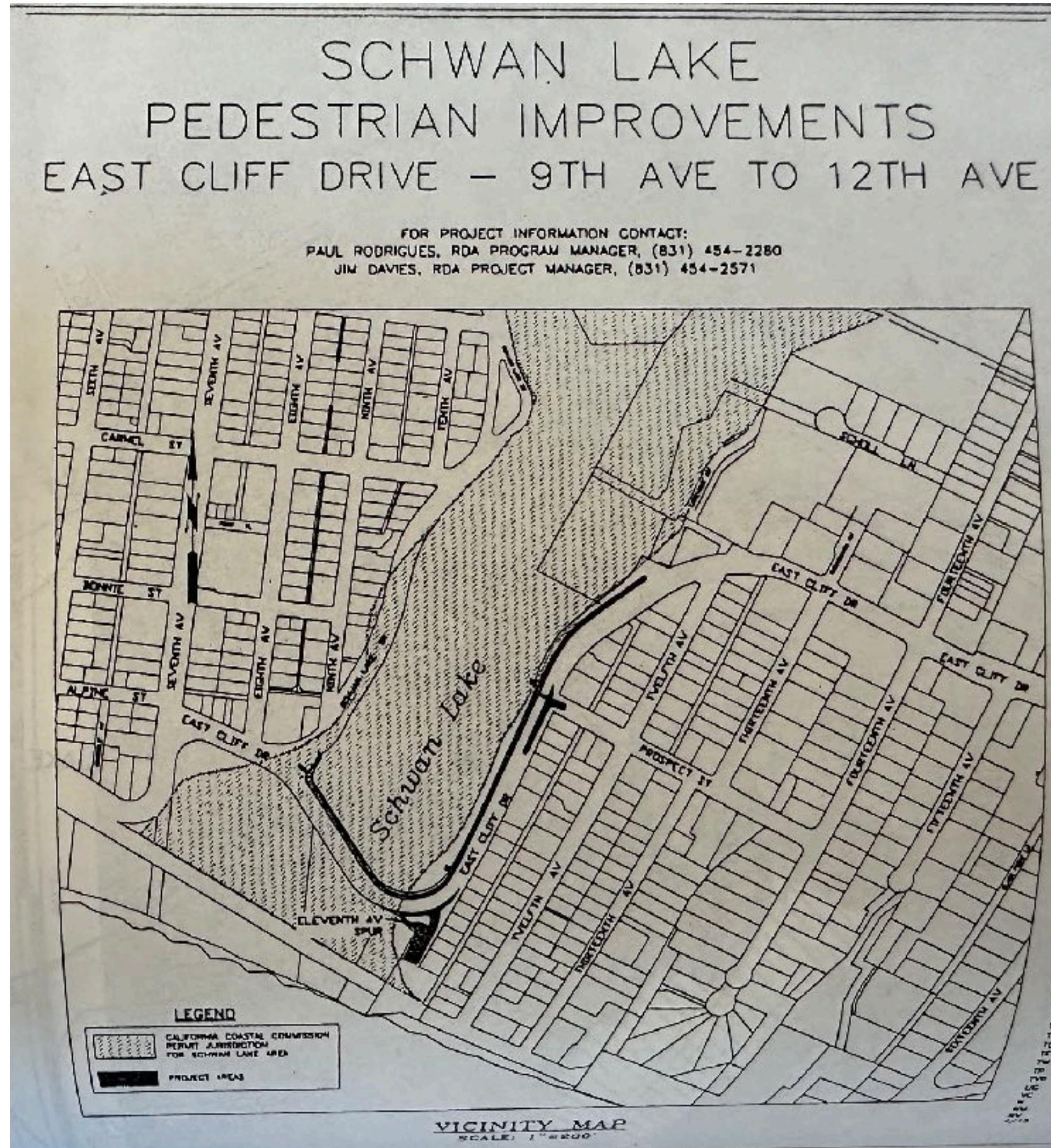


Option C

15 MPH

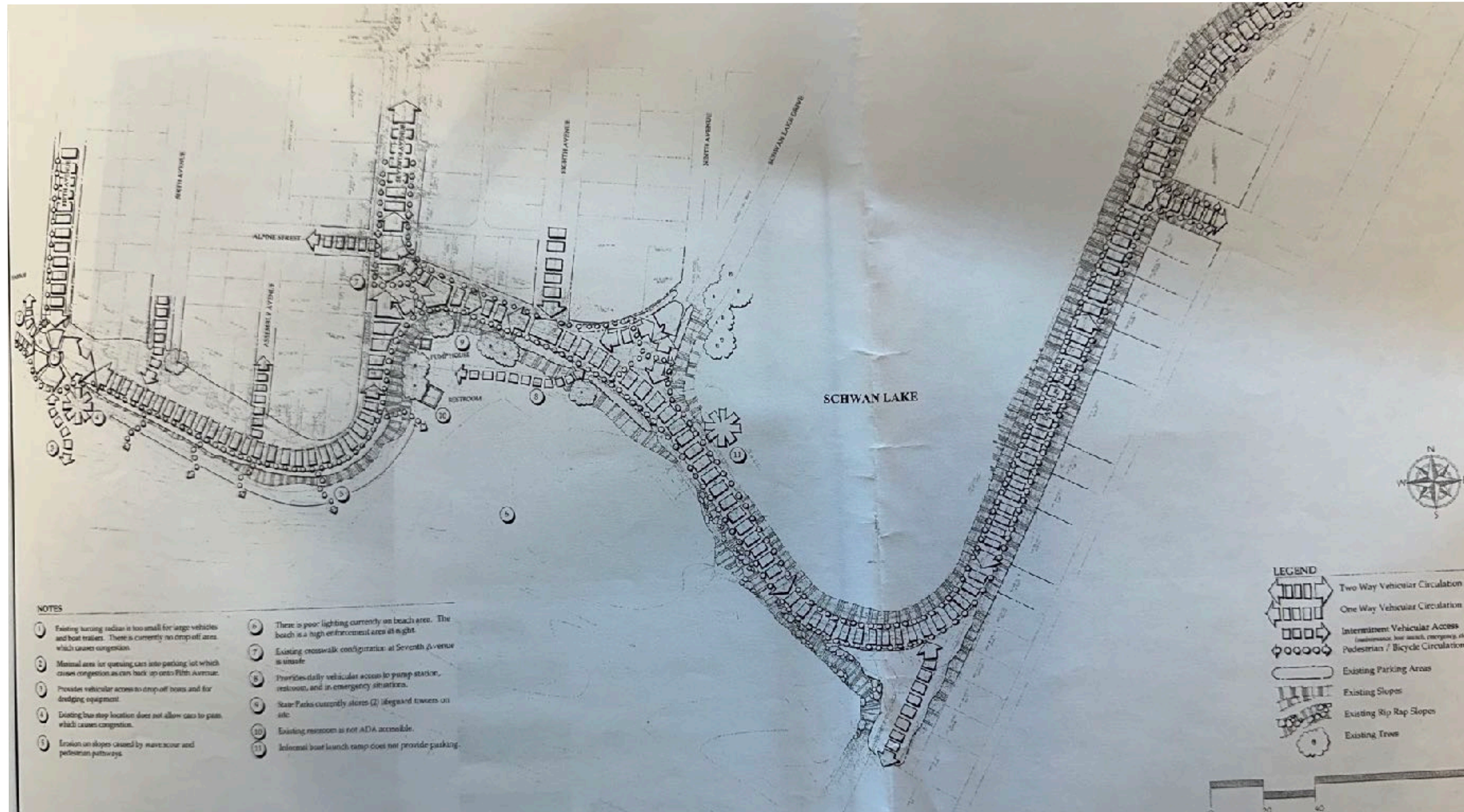


East Cliff 9th -12th Improvements

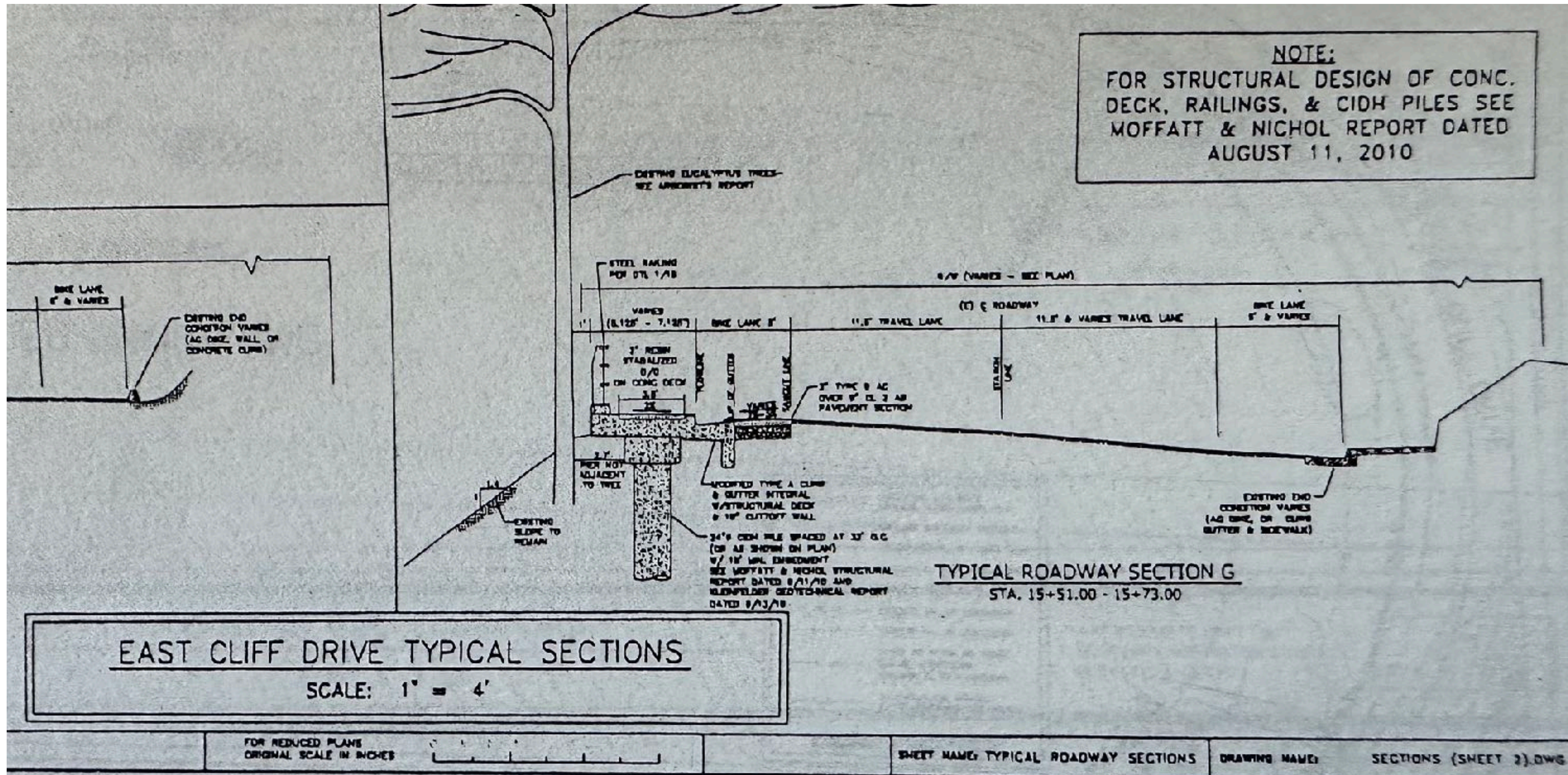


MANU KOENIG
1ST DISTRICT SUPERVISOR

East Cliff 9th -12th Improvements



East Cliff 9th -12th Improvements



Upcoming: Floral Park Groundbreaking next Monday at noon



MANU KOENIG
1ST DISTRICT SUPERVISOR

Questions?

first.district@santacruzcountyca.gov



MANU KOENIG
1ST DISTRICT SUPERVISOR